

GINGERBREAD HOUSE



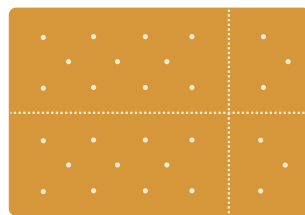
STEP 1: GATHER. COLLECT THE FOLLOWING SUPPLIES.

- 1 box of Graham Crackers
- 1 Frosting Jar (glue)
- 1 Scissors
- 1 Ziploc bag
- Butter/plastic knife
- Paper plates
- House decorations
 - Powdered sugar
 - Sprinkles
 - M&M's
 - Chocolate bars
 - Peppermints

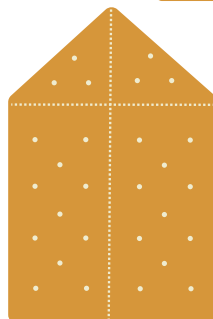
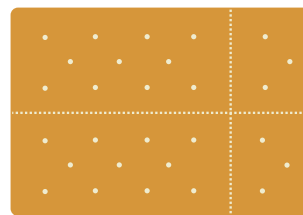
STEP 2: BUILD.

Place graham crackers on a plate. Use the butter knife to cut the graham crackers into the following shapes above. Then fill Ziploc bag half way with icing. Cut the tip of the Ziploc bag and gently squeeze until icing comes out.

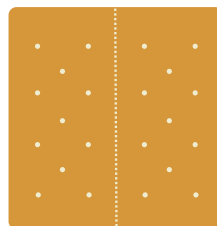
ROOF PIECE
3 1/2" X 1 3/4"



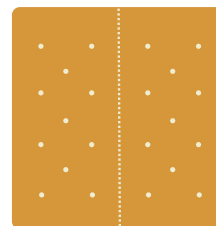
ROOF PIECE
3 1/2" X 1 3/4"



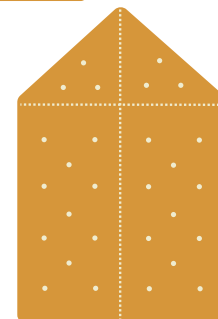
SIDE
3 1/2" X 2 1/4"



FRONT
2 1/4" X 2 1/4"



BACK
2 1/4" X 2 1/4"

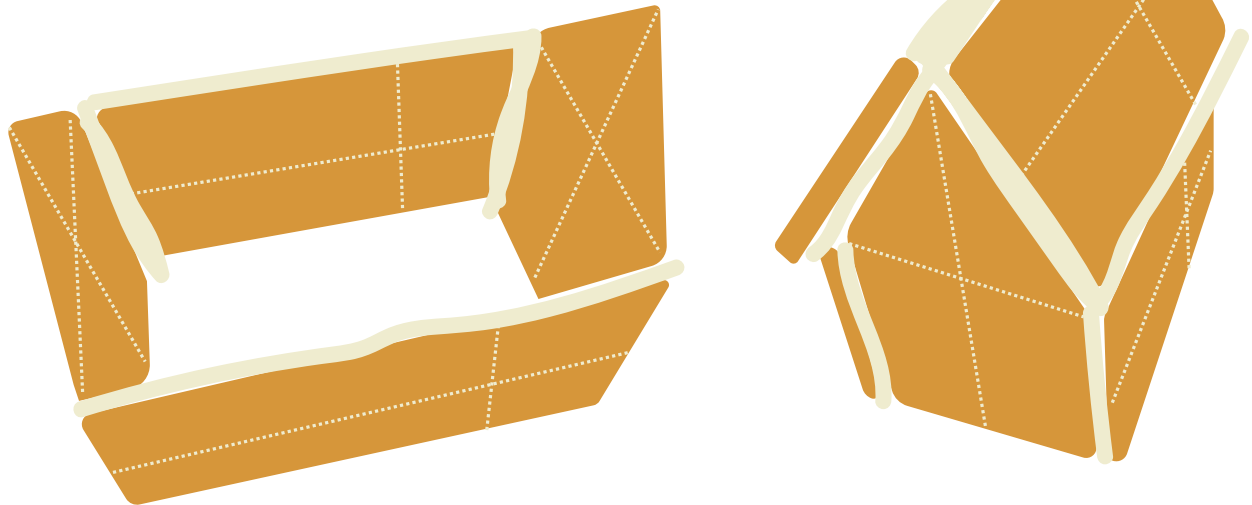


SIDE
3 1/2" X 2 1/4"

GINGERBREAD HOUSE

STEP 3: ASSEMBLE.

Line each edge of the graham a modest amount of icing, then place the crackers together as seen above. Leave for 3 minutes to dry. *It might not be fully dry yet so be gentle as you begin the next step.*



STEP 4: DECORATE!

Grab some of your favorite decorations and place them on your house using the “glue (icing)”.



GINGERBREAD SPOT THIS!



There are 10 differences between the two images. Can you find them?

